



COFFEE CHAT
WITH PRINCIPAL WALKER

Literacy in 3

iStation

EL

Letterland

Expeditionary
Learning



iStation

- K-3 Students
- Replaced mCLASS
- State-wide implementation.
- Vocabulary, Literacy, Comprehension, Fluency.



Expeditionary Learning

- Grades 2-8
- Complex Text
- Collaborative Protocols
- Parent Information

Online:

[https://www.wcpss.net
/domain/15265](https://www.wcpss.net/domain/15265)



Letterland

- K-2
- Phonemic Awareness
- Letter / Sound Development
- Spelling
- Vocabulary



2. MATH

Let's start with the first set of slides

Math Facts

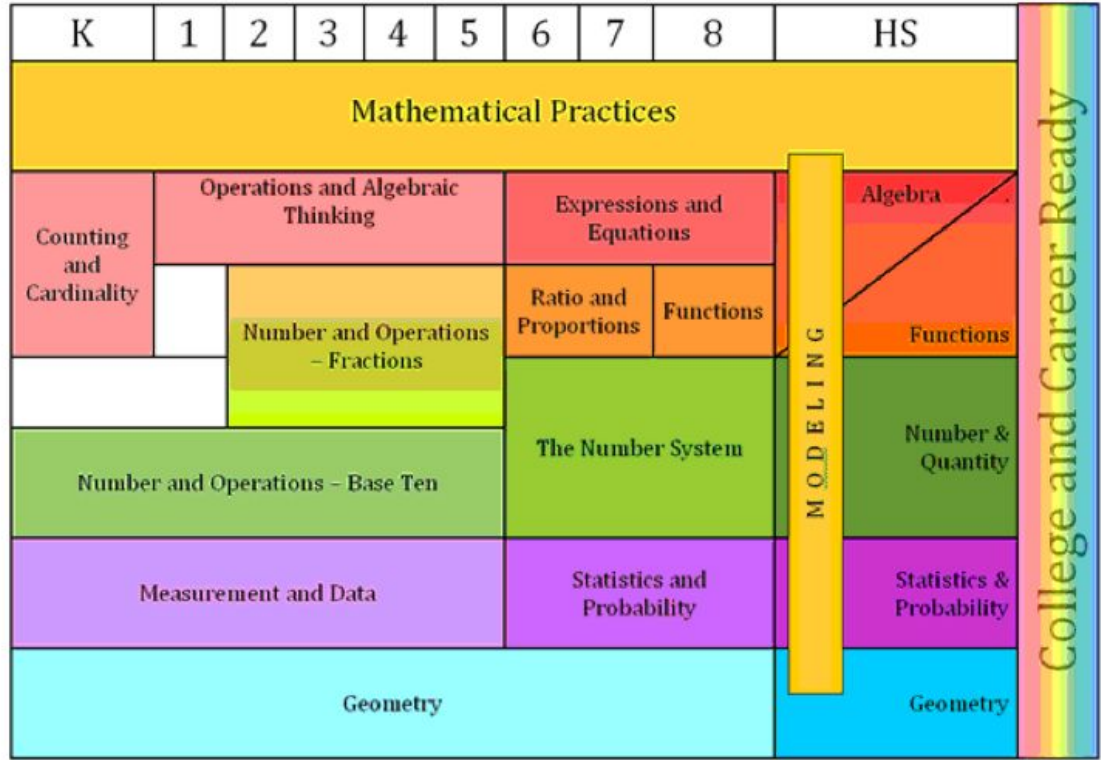


Figure 1: CCSS K-12 Mathematics Progression of Domains



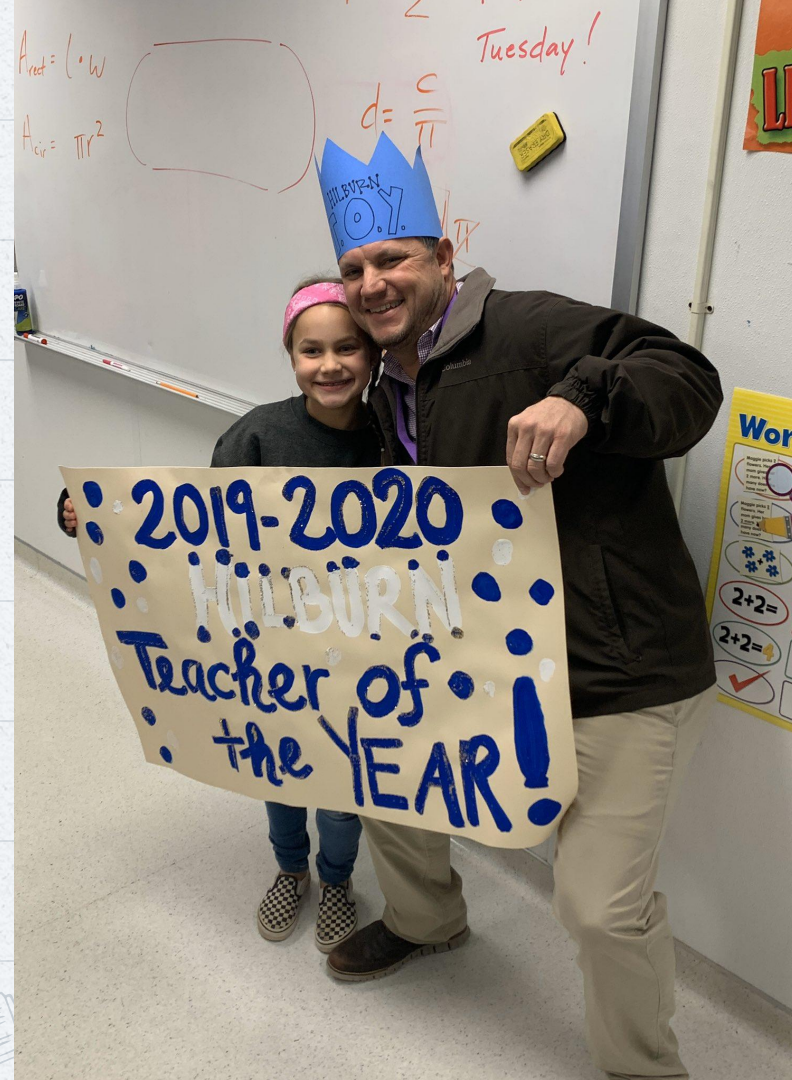
K-5 Math

- WCPSS Resources
- Vertical Progressions
- Conceptual Development
- Math Fluency
- Math Vocabulary



6-8 Math

- Open Up Math
- Conceptual Development
- Productive Struggle and Productive Engineering Process



Math 1 And Beyond

- MVP Math (Relevant Classes)
- Sequential Recommendations from WCPSS
- 8th Grade Math -> Math 1 Push
- Advanced Options





3.

BEYOND ACADEMICS

Let's start with the first set of slides

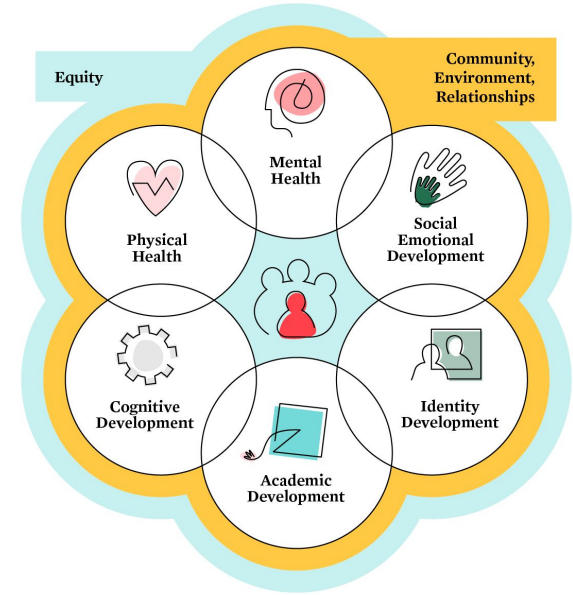
Other Goodies

SEL

Go Green

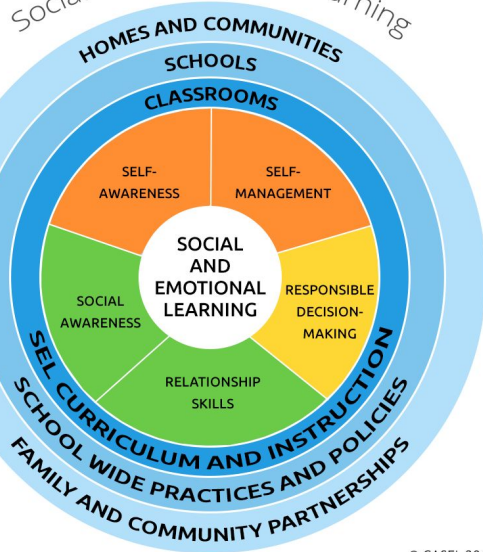
Engagement

**Educating
the Whole Child**



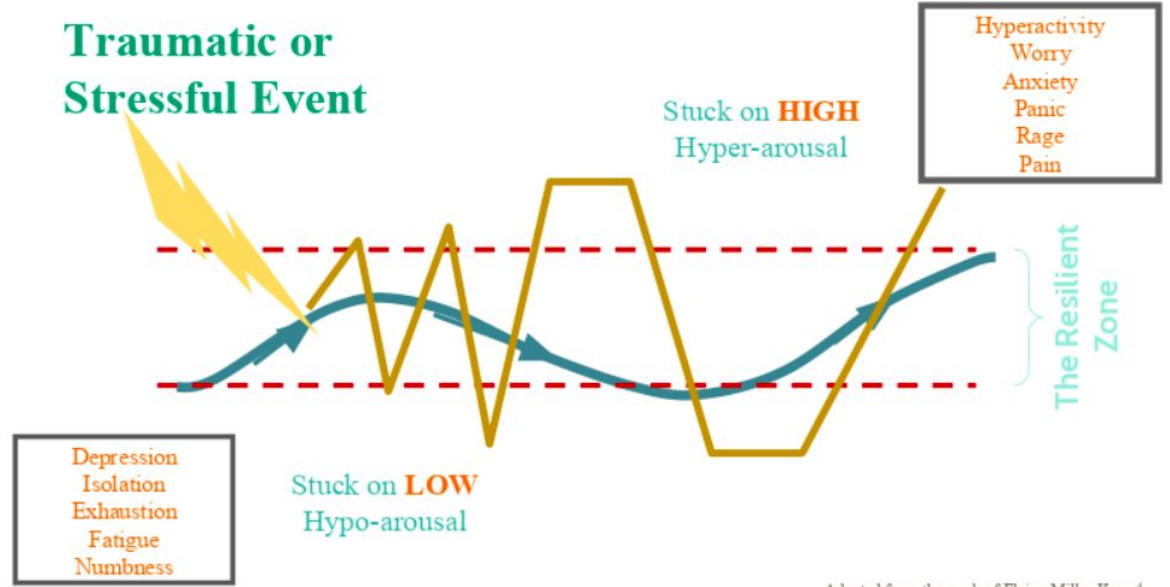
SEL

Framework for Systemic Social and Emotional Learning



© CASEL 2017

Traumatic or Stressful Event



Adapted from the work of Elaine Miller-Karas⁴

Character Development



Hilburn Hawks

STRIVE TO DO MY BEST

OWN MY ACTIONS

ACT RESPONSIBLY

RESPECT MYSELF
AND OTHERS



**EXPERIENCE =
USABILITY/ANALYTIC + DESIGN/CREATIVE**

Left-Brain Functions

Analytic thought

Logic

Language

Science and
math

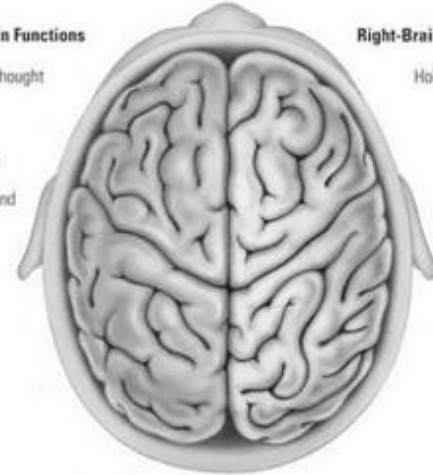
Right-Brain Functions

Holistic thought

Intuition

Creativity

Art and
music



Go Green

GREEN

YOUR

SCHOOL



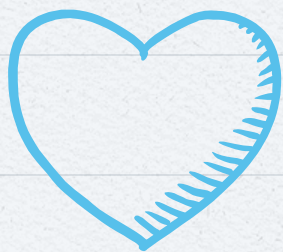
Engagement



**“Parents are the most
underused resources in
education!”**

BIG IMPACT

LOVE TO
LEARN



THANKS!

Any questions?